



Solid shaft collar

SC / SSC



Standard Tolerances

Dimensions		Tolerances
Bore	1/8" - 3"	+.001 - +.003
Bore	3" - 4-15/16"	+.001 - +.004

Product Data

Carbon Steel	Bore range 1/8" to 4-15/16"
	Alloy cup point set screw
	Mild Steel-Zinc plate finish
Stainless Steel	Bore range 1/8" to 3"
	S.S. cup point set screw Type 304 S.S. Material

Holding power is achieved by the set screw engagement into shaft material.

A low cost option when frequent adjustments are not required.

"RBL" Carbon Steel Part #	"RBL" Stainless Steel Part #	BORE "B"	O.D. "D"	Width "W"	SET SCREW SIZE
SC 1/8	SSC 1/8	1/8	0.355	0.250	6-32 x 1/8
SC 3/16	SSC 3/16	3/16	0.418	0.250	8-32 X 1/8
SC 1/4	SSC 1/4	1/4	0.480	0.281	10-32 X 1/8
SC 5/16	SSC 5/16	5/16	0.605	0.313	10-32 X 1/8
SC 3/8	SSC 3/8	3/8	0.730	0.375	1/4-20 X 3/16
SC 7/16	SSC 7/16	7/16	0.855	0.437	1/4-20 X 1/4
SC 1/2	SSC 1/2	1/2	0.980	0.437	1/4-20 X 1/4
SC 9/16	SSC 9/16	9/16	0.980	0.437	1/4-20 X 1/4
SC 5/8	SSC 5/8	5/8	1.105	0.500	5/16-18 X 1/4
SC 11/16	SSC 11/16	11/16	1.230	0.562	5/16-18 X 1/4
SC 3/4	SSC 3/4	3/4	1.230	0.562	5/16-18 X 1/4
SC 13/16	SSC 13/16	13/16	1.480	0.562	5/16-18 X 1/4
SC 7/8	SSC 7/8	7/8	1.480	0.562	5/16-18 X 5/16
SC 15/16	SSC 15/16	15/16	1.605	0.562	5/16-18 X 5/16
SC 1	SSC 1	1	1.605	0.625	5/16-18 X 5/16
SC 1-1/16	SSC 1-1/16	1-1/16	1.730	0.625	5/16-18 X 5/16
SC 1-1/8	SSC 1-1/8	1-1/8	1.730	0.625	5/16-18 X 5/16
SC 1-3/16	SSC 1-3/16	1-3/16	1.975	0.687	3/8-16 X 3/8
SC 1-1/4	SSC 1-1/4	1-1/4	1.975	0.687	3/8-16 X 3/8
SC 1-5/16	SSC 1-5/16	1-5/16	2.100	0.687	3/8-16 X 3/8
SC 1-3/8	SSC 1-3/8	1-3/8	2.100	0.750	3/8-16 X 3/8
SC 1-7/16	SSC 1-7/16	1-7/16	2.225	0.750	3/8-16 X 3/8
SC 1-1/2	SSC 1-1/2	1-1/2	2.225	0.813	3/8-16 X 3/8
SC 1-9/16	SSC 1-9/16	1-9/16	2.480	0.813	3/8-16 X 3/8
SC 1-5/8	SSC 1-5/8	1-5/8	2.480	0.813	3/8-16 X 3/8
SC1-11/16	SSC 1-11/16	1-11/16	2.480	0.813	3/8-16 X 3/8
SC 1-3/4	SSC 1-3/4	1-3/4	2.720	0.875	1/2-13 X 1/2
SC 1-13/16	SSC 1-13/16	1-13/16	2.720	0.875	1/2-13 X 1/2
SC 1-7/8	SSC 1-7/8	1-7/8	2.720	0.875	1/2-13 X 1/2
SC 1-15/16	SSC 1-15/16	1-15/16	2.975	0.875	1/2-13 X 1/2
SC 2	SSC 2	2	2.975	0.875	1/2-13 X 1/2
SC 2-1/8	SSC 2-1/8	2-1/8	2.975	0.875	1/2-13 X 1/2
SC 2-3/16	SSC 2-3/16	2-3/16	3.225	0.937	1/2-13 X 1/2
SC 2-1/4	SSC 2-1/4	2-1/4	3.225	0.937	1/2-13 X 1/2
SC 2-5/16	SSC 2-5/16	2-5/16	3.225	0.937	1/2-13 X 1/2
SC 2-3/8	SSC 2-3/8	2-3/8	3.225	0.937	1/2-13 X 1/2
SC 2-7/16	SSC 2-7/16	2-7/16	3.470	1.000	1/2-13 X 1/2
SC 2-1/2	SSC 2-1/2	2-1/2	3.470	1.000	1/2-13 X 1/2
SC 2-9/16	SSC 2-9/16	2-9/16	3.720	1.125	1/2-13 X 9/16
SC 2-5/8	SSC 2-5/8	2-5/8	3.720	1.125	1/2-13 X 9/16
SC 2-11/16	SSC 2-11/16	2-11/16	3.970	1.125	1/2-13 X 5/8
SC 2-3/4	SSC 2-3/4	2-3/4	3.970	1.125	1/2-13 X 5/8
SC 2-13/16	SSC 2-13/16	2-13/16	3.970	1.125	1/2-13 X 5/8
SC 2-7/8	SSC 2-7/8	2-7/8	4.220	1.125	1/2-13 X 5/8
SC 2-15/16	SSC 2-15/16	2-15/16	4.220	1.125	1/2-13 X 5/8
SC 3	SSC 3	3	4.220	1.125	1/2-13 X 5/8
SC 3-3/16	***	3-3/16	4.220	1.125	1/2-13 X 5/8
SC 3-7/16	***	3-7/16	4.470	1.125	1/2-13 X 5/8
SC 3-15/16	***	3-15/16	4.970	1.125	1/2-13 X 5/8
SC 4-7/16	***	4-7/16	5.970	1.375	5/8-11 X 3/4
SC 4-15/16	***	4-15/16	6.400	1.375	5/8-11 X 3/4



Standard Tolerances

Dimensions		Tolerances
Bore	1/8" - 3"	+0.001 - +.003
Bore	3" - 3 -15/16"	+0.001 - +.004

Product Data

Carbon Steel	Bore range 1/8" to 3 -15/16"
	Alloy cup point set screw Mild Steel-Zinc plate finish
Stainless Steel	Bore range 1/8" to 3" S.S. cup point set screw Type 304 S.S. Material

"RBL" Carbon Steel Part #	"RBL" Stainless Steel Part #	Bore "B"	O.D. "D"	Width "W"	Cap Screw Size
2SC 1/8	2SSC 1/8	1/8	1/2	1/4	4-40 X 3/8
2SC 3/16	2SSC 3/16	3/16	5/8	5/16	4-40 X 3/8
2SC 1/4	2SSC 1/4	1/4	11/16	5/16	4-40 X 3/8
2SC 5/16	2SSC 5/16	5/16	11/16	5/16	4-40 X 3/8
2SC 3/8	2SSC 3/8	3/8	7/8	11/32	6-32 X 3/8
2SC 7/16	2SSC 7/16	7/16	15/16	3/8	6-32 X 3/8
2SC 1/2	2SSC 1/2	1/2	1-1/8	13/32	8-32 X 1/2
2SC 9/16	2SSC 9/16	9/16	1-1/4	7/16	10-32 X 1/2
2SC 5/8	2SSC 5/8	5/8	1-5/16	7/16	10-32 X 1/2
2SC 11/16	2SSC 11/16	11/16	1-3/8	7/16	10-32 X 1/2
2SC 3/4	2SSC 3/4	3/4	1-1/2	1/2	1/4-28 X 5/8
2SC 13/16	2SSC 13/16	13/16	1-5/8	1/2	1/4-28 X 5/8
2SC 7/8	2SSC 7/8	7/8	1-5/8	1/2	1/4-28 X 5/8
2SC 15/16	2SSC 15/16	15/16	1-3/4	1/2	1/4-28 X 5/8
2SC 1	2SSC 1	1	1-3/4	1/2	1/4-28 X 5/8
2SC 1-1/16	2SSC 1-1/16	1-1/16	1-7/8	1/2	1/4-28 X 5/8
2SC 1-1/8	2SSC 1-1/8	1-1/8	1-7/8	1/2	1/4-28 X 5/8
2SC 1-3/16	2SSC 1-3/16	1-3/16	2-1/16	1/2	1/4-28 X 5/8
2SC 1-1/4	2SSC 1-1/4	1-1/4	2-1/16	1/2	1/4-28 X 5/8
2SC 1-5/16	2SSC 1-5/16	1-5/16	2-1/8	9/16	1/4-28 X 5/8
2SC 1-3/8	2SSC 1-3/8	1-3/8	2-1/4	9/16	1/4-28 X 5/8
2SC 1-7/16	2SSC 1-7/16	1-7/16	2-1/4	9/16	1/4-28 X 5/8
2SC 1-1/2	2SSC 1-1/2	1-1/2	2-3/8	9/16	1/4-28 X 5/8
2SC 1-9/16	2SSC 1-9/16	1-9/16	2-3/8	9/16	1/4-28 X 5/8
2SC 1-5/8	2SSC 1-5/8	1-5/8	2-5/8	11/16	5/16-24 X 7/8
2SC 1-11/16	2SSC 1-11/16	1-11/16	2-3/4	11/16	5/16-24 X 7/8
2SC 1-3/4	2SSC 1-3/4	1-3/4	2-3/4	11/16	5/16-24 X 7/8
2SC 1-13/16	2SSC 1-13/16	1-13/16	2-7/8	11/16	5/16-24 X 7/8
2SC 1-7/8	2SSC 1-7/8	1-7/8	2-7/8	11/16	5/16-24 X 7/8
2SC 1-15/16	2SSC 1-15/16	1-15/16	3	11/16	5/16-24 X 7/8
2SC 2	2SSC 2	2	3	11/16	5/16-24 X 7/8
2SC 2-1/16	2SSC 2-1/16	2-1/16	3-1/8	3/4	5/16-24 X 7/8
2SC 2-1/8	2SSC 2-1/8	2-1/8	3-1/4	3/4	5/16-24 X 7/8
2SC 2-3/16	2SSC 2-3/16	2-3/16	3-1/4	3/4	5/16-24 X 7/8
2SC 2-1/4	2SSC 2-1/4	2-1/4	3-1/4	3/4	5/16-24 X 7/8
2SC 2-5/16	2SSC 2-5/16	2-5/16	3-3/8	3/4	5/16-24 X 7/8
2SC 2-3/8	2SSC 2-3/8	2-3/8	3-1/2	3/4	5/16-24 X 7/8
2SC 2-7/16	2SSC 2-7/16	2-7/16	3-1/2	3/4	5/16-24 X 7/8
2SC 2-1/2	2SSC 2-1/2	2-1/2	3-3/4	7/8	3/8-24 X 7/8
2SC 2-9/16	2SSC 2-9/16	2-9/16	3-7/8	7/8	3/8-24 X 7/8
2SC 2-5/8	2SSC 2-5/8	2-5/8	3-7/8	7/8	3/8-24 X 7/8
2SC 2-11/16	2SSC 2-11/16	2-11/16	4	7/8	3/8-24 X 7/8
2SC 2-3/4	2SSC 2-3/4	2-3/4	4	7/8	3/8-24 X 7/8
2SC 2-13/16	2SSC 2-13/16	2-13/16	4-1/4	7/8	3/8-24 X 7/8
2SC 2-7/8	2SSC 2-7/8	2-7/8	4-1/4	7/8	3/8-24 X 7/8
2SC 2-15/16	2SSC 2-15/16	2-15/16	4-1/4	7/8	3/8-24 X 7/8
2SC 3	2SSC 3	3	4-1/4	7/8	3/8-24 X 7/8
2SC 3-3/16		3-3/16	4-1/2	7/8	3/8-24 X 7/8
2SC 3-7/16		3-7/16	4-3/4	7/8	3/8-24 X 7/8
2SC 3-1/2		3-1/2	4-3/4	7/8	3/8-24 X 7/8
2SC 3-15/16		3-15/16	5-1/4	7/8	3/8-24 X 7/8



Single split shaft collar

CSC / CSSC



Standard Tolerances

Dimensions		Tolerances
Bore	1/8" - 3"	+0.001 - +.003
Bore	3" - 3-15/16"	+0.001 - +.004

Product Data

Carbon Steel	Bore range 1/8" to 3-15/16"
	Alloy cup point set screw Mild Steel-Zinc plate finish
Stainless Steel	Bore range 1/8" to 3"
	S.S. cup point set screw Type 304 S.S. Material

"RBL" Carbon Steel Part #	"RBL" Stainless Steel Part #	Bore "B"	O.D. "D"	Width "W"	Cap Screw Size
CSC 1/8	CSSC 1/8	1/8	1/2	1/4	4-40 X 3/8
CSC 3/16	CSSC 3/16	3/16	5/8	5/16	4-40 X 3/8
CSC 1/4	CSSC 1/4	1/4	11/16	5/16	4-40 X 3/8
CSC 5/16	CSSC 5/16	5/16	11/16	5/16	4-40 X 3/8
CSC 3/8	CSSC 3/8	3/8	7/8	11/32	6-32 X 3/8
CSC 7/16	CSSC 7/16	7/16	15/16	3/8	6-32 X 3/8
CSC 1/2	CSSC 1/2	1/2	1-1/8	13/32	8-32 X 1/2
CSC 9/16	CSSC 9/16	9/16	1-1/4	7/16	10-32 X 1/2
CSC 5/8	CSSC 5/8	5/8	1-5/16	7/16	10-32 X 1/2
CSC 11/16	CSSC 11/16	11/16	1-3/8	7/16	10-32 X 1/2
CSC 3/4	CSSC 3/4	3/4	1-1/2	1/2	1/4-28 X 5/8
CSC 13/16	CSSC 13/16	13/16	1-5/8	1/2	1/4-28 X 5/8
CSC 7/8	CSSC 7/8	7/8	1-5/8	1/2	1/4-28 X 5/8
CSC 13/16	CSSC 13/16	15/16	1-3/4	1/2	1/4-28 X 5/8
CSC 1	CSSC 1	1	1-3/4	1/2	1/4-28 X 5/8
CSC 1-1/16	CSSC 1-1/16	1-1/16	1-7/8	1/2	1/4-28 X 5/8
CSC 1-1/8	CSSC 1-1/8	1-1/8	1-7/8	1/2	1/4-28 X 5/8
CSC 1-3/16	CSSC 1-3/16	1-3/16	2-1/16	1/2	1/4-28 X 5/8
CSC 1-1/4	CSSC 1-1/4	1-1/4	2-1/16	1/2	1/4-28 X 5/8
CSC 1-5/16	CSSC 1-5/16	1-5/16	2-1/8	9/16	1/4-28 X 5/8
CSC 1-3/8	CSSC 1-3/8	1-3/8	2-1/4	9/16	1/4-28 X 5/8
CSC 1-7/16	CSSC 1-7/16	1-7/16	2-1/4	9/16	1/4-28 X 5/8
CSC 1-1/2	CSSC 1-1/2	1-1/2	2-3/8	9/16	1/4-28 X 5/8
CSC 1-9/16	CSSC 1-9/16	1-9/16	2-3/8	9/16	1/4-28 X 5/8
CSC 1-5/8	CSSC 1-5/8	1-5/8	2-5/8	11/16	5/16-24 X 7/8
CSC 1-11/16	CSSC 1-11/16	1-11/16	2-3/4	11/16	5/16-24 X 7/8
CSC 1-3/4	CSSC 1-3/4	1-3/4	2-3/4	11/16	5/16-24 X 7/8
CSC 1-13/16	CSSC 1-13/16	1-13/16	2-7/8	11/16	5/16-24 X 7/8
CSC 1-7/8	CSSC 1-7/8	1-7/8	2-7/8	11/16	5/16-24 X 7/8
CSC 1-15/16	CSSC 1-15/16	1-15/16	3	11/16	5/16-24 X 7/8
CSC 2	CSSC 2	2	3	11/16	5/16-24 X 7/8
CSC 2-1/16	CSSC 2-1/16	2-1/16	3-1/8	3/4	5/16-24 X 7/8
CSC 2-1/8	CSSC 2-1/8	2-1/8	3-1/4	3/4	5/16-24 X 7/8
CSC 2-3/16	CSSC 2-3/16	2-3/16	3-1/4	3/4	5/16-24 X 7/8
CSC 2-1/4	CSSC 2-1/4	2-1/4	3-1/4	3/4	5/16-24 X 7/8
CSC 2-5/16	CSSC 2-5/16	2-5/16	3-3/8	3/4	5/16-24 X 7/8
CSC 2-3/8	CSSC 2-3/8	2-3/8	3-1/2	3/4	5/16-24 X 7/8
CSC 2-7/16	CSSC 2-7/16	2-7/16	3-1/2	3/4	5/16-24 X 7/8
CSC 2-1/2	CSSC 2-1/2	2-1/2	3-3/4	7/8	3/8-24 X 7/8
CSC 2-9/16	CSSC 2-9/16	2-9/16	3-7/8	7/8	3/8-24 X 7/8
CSC 2-5/8	CSSC 2-5/8	2-5/8	3-7/8	7/8	3/8-24 X 7/8
CSC 2-11/16	CSSC 2-11/16	2-11/16	4	7/8	3/8-24 X 7/8
CSC 2-3/4	CSSC 2-3/4	2-3/4	4	7/8	3/8-24 X 7/8
CSC 2-13/16	CSSC 2-13/16	2-13/16	4-1/4	7/8	3/8-24 X 7/8
CSC 2-7/8	CSSC 2-7/8	2-7/8	4-1/4	7/8	3/8-24 X 7/8
CSC 2-15/16	CSSC 2-15/16	2-15/16	4-1/4	7/8	3/8-24 X 7/8
CSC 3	CSSC 3	3	4-1/4	7/8	3/8-24 X 7/8
CSC 3-3/16	CSSC 3-3/16	3-3/16	4-1/2	7/8	3/8-24 X 7/8
CSC 3-7/16	CSSC 3-7/16	3-7/16	4-3/4	7/8	3/8-24 X 7/8
CSC 3-1/2	CSSC 3-1/2	3-1/2	4-3/4	7/8	3/8-24 X 7/8
CSC 3-13/16	CSSC 3-13/16	3-13/16	5-1/16	7/8	3/8-24 X 7/8
CSC 3-15/16	CSSC 3-15/16	3-15/16	5-1/4	7/8	3/8-24 X 7/8

Threaded single split shaft collar

TCSC



"RBL" Carbon Steel Part #	Bore "B"	O.D. "D"	Width "W"	Cap Screw Size
TCSC 0250-20	1/4"-20	11/16	5/16	4-40 X 3/8
TCSC 0250-28	1/4"-28	11/16	5/16	4-40 X 3/8
TCSC 0312-18	5/16"-18	11/16	5/16	4-40 X 3/8
TCSC 0312-24	5/16"-24	11/16	5/16	4-40 X 3/8
TCSC 0375-16	3/8"-16	7/8	3/8	6-32 X 3/8
TCSC 0375-24	3/8"-24	7/8	3/8	6-32 X 3/8
TCSC 0500-13	1/2"-13	1-1/8	13/32	8-32 X 1/2
TCSC 0500-20	1/2"-20	1-1/8	13/32	8-32 X 1/2
TCSC 0625-11	5/8"-11	1-5/16	7/16	10-32 X 1/2
TCSC 0625-18	5/8"-18	1-5/16	7/16	10-32 X 1/2
TCSC 0750-10	3/4"-10	1-1/2	1/2	1/4-28 X 5/8
TCSC 0750-15	3/4"-15	1-1/2	1/2	1/4-28 X 5/8
TCSC 0875-09	7/8"-9	1-5/8	1/2	1/4-28 X 5/8
TCSC 0875-14	7/8"-14	1-5/8	1/2	1/4-28 X 5/8
TCSC 1000-08	1"-8	1-3/4	1/2	1/4-28 X 5/8
TCSC 1000-14	1"-14	1-3/4	1/2	1/4-28 X 5/8
TCSC 1250-07	1 1/4"-7	2-1/16	1/2	1/4-28 X 5/8
TCSC 1250-12	1 1/4"-12	2-1/16	1/2	1/4-28 X 5/8
TCSC 1500-06	1 1/2"-6	2-3/8	9/16	1/4-28 X 5/8
TCSC 1500-12	1 1/2"-12	2-3/8	9/16	1/4-28 X 5/8
TCSC 2000-12	2"-12	3	11/16	5/16-24 X 7/8

Standard Tolerances

Dimensions		Tolerances
Bore	1/8" - 1"	+0.001 - +.003
Bore	1-1/4" - 2"	+0.001 - +.004

Product Data

Carbon Steel	Bore range 1/4"-20 to 2"-12 Alloy cap screw Mild Steel-Black oxide finish
--------------	---

Heavy duty split shaft collar

SPLIT SC



"RBL" Part #	Bore "B"	O.D. "D"	Width "W"	SET Screw Size
SPLIT SC X 1-7/16	1-7/16	2.87	3/4	2 x 3/8
SPLIT SC X 1-15/16	1-15/16	3.87	1	2 x 1/2
SPLIT SC X 2-3/16	2-3/16	4.12	1	2 x 1/2
SPLIT SC X 2-7/16	2-7/16	4.62	1	2 x 1/2
SPLIT SC X 2-15/16	2-15/16	5.12	1-1/8	2 x 1/2
SPLIT SC X 3-7/16	3-7/16	5.62	1-1/4	2 x 1/2
SPLIT SC X 3-15/16	3-15/16	6.37	1-1/4	2 x 5/8
SPLIT SC X 4-7/16	4-7/16	6.87	1-3/8	2 x 5/8
SPLIT SC X 4-15/16	4-15/16	7.87	1-3/8	2 x 5/8
SPLIT SC X 5-7/16	5-7/16	8.37	1-3/8	2 x 5/8
SPLIT SC X 5-15/16	5-15/16	9.12	1-3/8	2 x 5/8

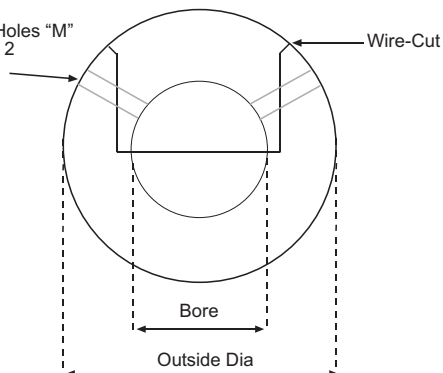
Standard Tolerances

Dimensions	Tolerance
Bore	1-7/16 - 5-15/16 -.000 / +.006

Product Data

SPLIT SC	Bore Range 1-7/16 - 5-15/16 Carbon Steel- 2 Set Screws
----------	---

2 Tapped Holes "M"
UNC class 2





Solid Rigid Couplings

RC / RC-KW



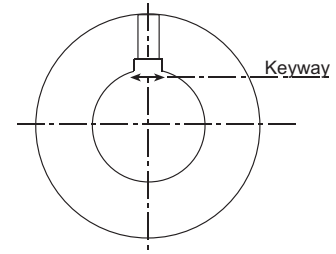
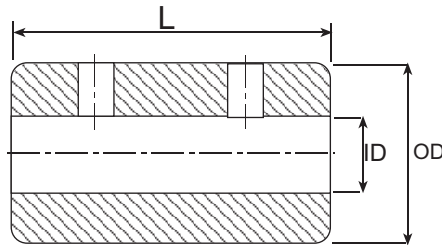
RBL Rigid Coupling "No Keyway"	RBL Rigid Coupling "With Keyway"	Bore "B"	O.D. "D"	Length "L"	SET SCREW SIZE
RC 025	RC 025-KW	1/4	1/2	3/4	10-32 X 1/8
RC 031	RC 031-KW	5/16	5/8	1	10-32 X 1/8
RC 037	RC 037-KW	3/8	3/4	1	1/4-20 X 3/16
RC 050	RC 050-KW	1/2	1	1-1/2	1/4-20 X 1/4
RC 062	RC 062-KW	5/8	1-1/4	2	5/16-18 X 1/4
RC 075	RC 075-KW	3/4	1-1/2	2	5/16-18 X 5/16
RC 087	RC 087-KW	7/8	1-3/4	2	5/16-18 X 5/16
RC 100	RC 100-KW	1	2	3	3/8-16 X 3/8
RC 112	RC 112-KW	1-1/8	2-1/8	3	3/8-16 X 3/8
RC 125	RC 125-KW	1-1/4	2-1/4	4	3/8-16 X 3/8

Standard Tolerance

Dimensions	Tolerances
Bore 1/8" - 7/8"	+0.001 - +0.003
Bore 1" - 1-1/4"	+0.001 - +0.004

Product Data

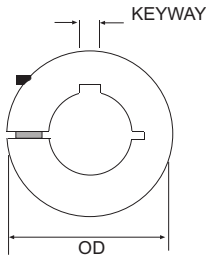
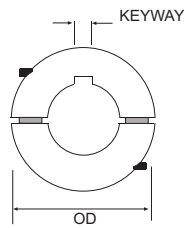
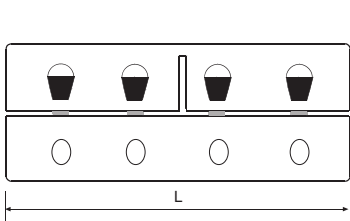
	Bore range 1/4" to 1-1/4"
Carbon Steel	Alloy cap screw
	Mild Steel-Black oxide finish



Split Rigid Couplings

1RC-KW / 2RC-KW

RBL Rigid Coupling "1 Pc Split"	RBL Rigid Coupling "2 Pc Split"	Bore "B"	O.D. "D"	Length "L"	CAP SCREW SIZE
1 RC 025-KW	2 RC 025-KW	1/4	1/2	3/4	4-40 X 3/8
1 RC 031-KW	2 RC 031-KW	5/16	5/8	1	4-40 X 3/8
1 RC 037-KW	2 RC 037-KW	3/8	3/4	1	6-32 X 3/8
1 RC 050-KW	2 RC 050-KW	1/2	1	1-1/2	8-32 X 1/2
1 RC 062-KW	2 RC 062-KW	5/8	1-1/4	2	10-32 X 1/2
1 RC 075-KW	2 RC 075-KW	3/4	1-1/2	2	1/4-28 X 5/8
1 RC 087-KW	2 RC 087-KW	7/8	1-3/4	2	1/4-28 X 5/8
1 RC 100-KW	2 RC 100-KW	1	2	3	1/4-28 X 5/8
1 RC 112-KW	2 RC 112-KW	1-1/8	2-1/8	3	1/4-28 X 5/8
1 RC 125-KW	2 RC 125-KW	1-1/4	2-1/4	4	1/4-28 X 3/4



Standard Tolerance

Dimensions	Tolerances
Bore 1/8" - 7/8"	+0.001 - +0.003
Bore 1" - 1-1/4"	+0.001 - +0.004

Product Data

	Bore range 1/4" to 1-1/4"
Carbon Steel	Alloy cap screw
	Mild Steel-Black oxide finish

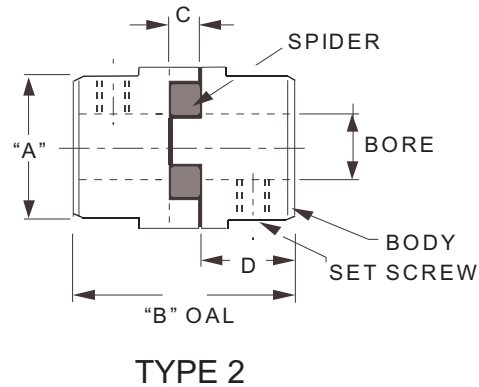
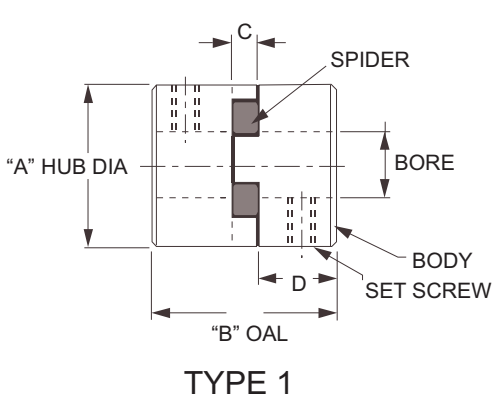




Coupling Size	Type	Bore Range	Outside Dia. "OD"	Hub Dia "A"	Overall Length "B"	Gap "C"	LTB "D"	Screw Size	Torque Rating in Lbs	Horsepower capacity at various "RPM"			
										100	1200	1800	3600
L035	1	1/4"-7/16"	5/8	5/8	13/16	9/32	17/64	6-32	3.5	0.006	0.07	0.10	0.20
L050	1	1/4"-5/8"	1 5/16	1 5/16	1 23/32	15/32	5/8	1/4"-20	26	0.042	0.50	0.75	1.50
L070	1	1/4"-3/4"	1 23/64	1 23/64	2	1/2	3/4	1/4"-20	42	0.070	0.84	1.23	2.52
L075	1	1/4"-7/8"	1 3/4	1 3/4	2 1/8	1/2	13/16	1/4"-20	90	0.140	1.68	2.57	5.04
L090	1	1/4"-1"	2 7/64	2 7/64	2 1/8	1/2	13/16	1/4"-20	144	0.230	2.76	4.11	8.28
L095	1	3/8"-1 1/8"	2 7/64	2 7/64	2 1/2	1/2	1	5/16"-18	144	0.310	3.72	5.50	11.10
L099	1	7/16"-1 3/16"	2 17/32	2 17/32	2 7/8	3/4	1 1/16	5/16"-18	318	0.500	6.00	9.00	18.00
L100	1	7/16"-1 7/16"	2 17/32	2 17/32	3 1/2	3/4	1 3/8	5/16"-18	417	0.660	7.90	11.90	23.75
L110	1	5/8"- 1 5/8"	3 5/16	3 5/16	4 1/4	7/8	1 11/16	3/8"-16	792	1.250	15.10	23.00	45.25
L150	1	5/8"- 1 7/8"	3 3/4	3 3/4	4 1/2	1	1 3/4	3/8"-16	1240	2.000	24.00	35.00	72.00
L190	2	3/4"-2 1/8"	4 1/2	4	5 1/4	1	2 1/8	1/2"-13	1726	2.700	32.40	49.00	97.00
L225	2	7/8"-2 3/8"	5	4 1/4	6	1	2 1/2	1/2"-13	2340	3.700	44.00	67.00	133.00

* Torque ratings based on Buna-N rubber insert and service factor of one.

* All dimensions are in inches.



Product Data

All Types
Bore Size - 3/16 to 2 3/8"
Sintered Steel

Standard Tolerances

Dimensions	Tolerance
Bore 3/16" to 2"	+0.001 / -.000
Bore 2-1/16" to 2-3/8"	+0.0015 / -.000



Standard bore Keyway Chart

Bore	Keyway	LO35	L050	L070	L075	L090	L095	L099	L100	L110	L150	L190	L225
1/8"	No Keyway	X											
3/16"	No Keyway	X											
1/4"	No Keyway	X	X	X	X	X							
5/16"	No Keyway	X	X	X	X	X							
3/8"	No Keyway	X	X	X	X	X	X						
3/8"	1/8" x 1/16"		X			X							
7/16"	No Keyway	X	X	X	X	X	X	X	X				
7/16"	1/8" x 1/16"					X	X	X	X				
1/2"	No Keyway		X	X	X	X		X	X				
1/2"	1/8" x 1/16"		X	X	X	X	X	X	X				
9/16"	1/8" x 1/16"		X	X	X	X	X	X	X				
5/8"	3/16 x 3/32"		X	X	X	X	X	X	X	X	X		
11/16"	3/16 x 3/32"			X	X	X	X	X	X	X	X		
3/4"	3/16 x 3/32"			X	X	X	X	X	X	X	X	X	X
7/8"	3/16 x 3/32"				X	X	X	X	X	X	X	X	X
15/16"	1/4" x 1/8"					X	X	X	X	X	X	X	X
1"	1/4" x 1/8"					X	X	X	X	X	X	X	X
1 1/16"	1/4" x 1/8"						X	X	X	X	X	X	X
1 1/8"	1/4" x 1/8"						X	X	X	X	X	X	X
1 3/16"	1/4" x 1/8"							X	X	X	X	X	X
1 1/4"	5/16" x 5/32"								X	X	X	X	X
1 3/8"	5/16" x 5/32"								X	X	X	X	X
1 7/16"	3/8" x 3/16"								X	X	X	X	X
1 1/2"	3/8" x 3/16"									X	X	X	X
1 5/8"	3/8" x 3/16"									X	X	X	X
1 3/4"	3/8" x 3/16"										X	X	X
1 7/8"	1/2" x 1/4"										X	X	X
1 15/16"	1/2" x 1/4"											X	X
2"	1/2" x 1/4"											X	X
2 1/8"	1/2" x 1/4"											X	X
2 3/8"	5/8" x 5/16"												X
2 5/8"	5/8" x 5/16"												X

Spider Performance Data						
Type	Description	Temp Range	Misalignment Information		Dampening	Color
			Angular Deg.	Parallel Inch		
Buna N	Standard-Flexible	-40 C to +100C	1	.015"	High	Black
Urethane U	Higher Torque	-30 C to +70 C	1	.015"	Low	White
Hytrel H	High Torque & Heat	-50C to + 120C	1/2	.015"	Low	Brown
Bronze B	Rigid - Slow Speed	-40C to +230C	1/2	.010"	None	Bronze

Service Factors	
Load Type	Service Factor
Uniform Load - No Shock	1.00
Reversing / Uneven Load - Light Shock	1.75
Sudden Stops / Starts - Heavy Shock	2.50

Design Calculations	
Nominal Torque =	(HP x 63025)
(NM)	RPM
Design Torque =	NM x Service Factor



RBL	CLIMAX	RULAND	STAFFORD	BOSTON	LOVEJOY	RINGFEDER	B-LOC	TSUBAKI
SC1	C-100	SC16-F	6L100P2	SC100	LSC-16 17521			
SSC1	C-100-S	SC16-SS	6S100	SSC100	LSC-16 17585			
CSC1	H1C-100		1L100	CSC100				
CSSC1	H1C-100-S		1S100	CSSC100				
2SC1	H2C-100		2L100	2SC100				
2SSC1	H2C-100-S		2S100	2SSC100				
TCSC 1000-08	ISTC-100-08	TCL-16-8-F	7L100C					
RC100	RC-100	SCX-16-16-F		CR16				
RC100	RC-100-KW	SCC-16-16-F		SC-1000				
1RC100-KW	ISCC-100-100-KW	CLC-16-16-F	7L100100K					
2RC100-KW	2ISCC-100-100KW	SPC-16-16-F	7L100100FK					
TLK 132 1	C123E-100				SLD1350IN1	RfN7013.0-IN-1	B103 1	
TLK 133 1	C133E-100	CDF-16-F			SLD1450IN1	RfN7013.1-IN-1	B106 1	
TLK 200 1	C200E-100	CDA-16-F	PRL100		SLD1500IN1	RfN7012-IN-1	B400 1	PL1
TLK 450 1	C405E-100				SLD2600IN1	TAS3012-IN-1	B112 1	
TLK 110 1	C170E-100				SLD1900IN1	RfN7110-IN-1	B800 1	
TLK 300 25X30	C501M-25X30				SLD350MM25X30	RfN8006-25X30		
TLK 603 24	C733M-24				SLD900MM24	RfN4071-24	SD 24 10	

Interchanges are for comparison only. Dimensions may vary

Tolerances - Collars		
Dimension	Type	Tolerance
Bore	Specified on individual pages of catalogue	
Outside Diameter	Solid Setscrew Collars 3/8" to 1" O.D.	+ .000" / - .010"
	Solid Setscrew Collars 1-1/8" to 4" O.D.	+ .000" / - .012"
	Split Clamp Collars 5/8" to 7-1/2" O.D.	+ .000" / - .015"
	H.D. Split SC Collars 2" to 10" O.D.	+ .000" / - .010"
Width	All Types & Sizes	+ / - .005"

Tolerances - Couplings		
Bore	All Types & Sizes	+ .001" / + .003"
Outside Diameter	All Types & Sizes	+ .000" / - .015"
Length	All Types & Sizes	+ / - .005"
Keyway Width	All Types & Sizes	+ .003" / - .000"

Socket Set Screw Solid / Split Sc Collars	
Set Screw Size	Axial Load Pounds
6-32	250
8-32	390
10-32	525
1/4-20	950
5/16-18	1500
5/16-24	1500
3/8-16	2100
1/2-13	3000
5/8-11	4000

Socket Cap Screw Recommended Seating Torque- In/Lbs			
Set Screw Size	Steel	Stainless	
4-40	15	8	
6-32	25	15	
8-32	50	30	
10-32	75	45	
1/4-28	175	115	
5/16-24	340	200	
3/8-24	600	350	

Socket Cap Screw Clamp Collars	
Cap Screw Size	Axial Load Pounds
4-40	200
6-32	500
8-32	900
10-32	1700
1/4-28	2600
5/16-24	6100
3/8-24	7200

Socket Set Screw Recommended Seating Torque- In/Lbs		
Set Screw Size	Steel	Stainless
6-32	10	7
8-32	20	15
10-32	35	25
1/4-20	90	70
5/16-18	170	135
5/16-24	170	135
3/8-16	300	235
1/2-13	625	500
5/8-11	1200	NA