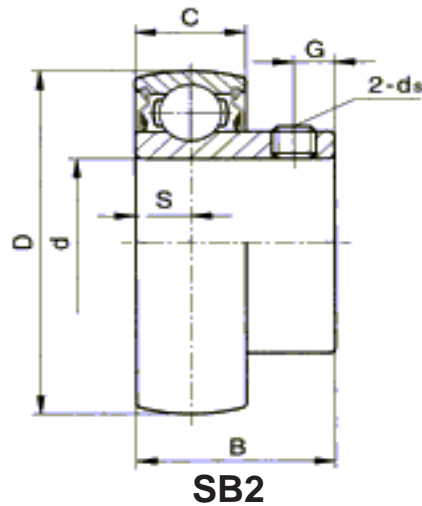




Bearing inserts
set screw locking



Bearing No.	Shaft Dia.		Dimensions (mm) (inch)							Basic load ratings (KN)		Weight (kg) (lb)	
	d		D	B	C	S	h	G	ds	Cr	Cor		
	(in.)	(mm)											
SB 201	1/2	12	40	22	12	6.0	3.4	4.0	M5X0.8	9.5	4.7	0.10	
201-8			1.5748	0.8661	0.4724	0.2362	0.1338	0.1575	10-32UNF			0.22	
SB 202	9/16	15	40	22	12	6.0	3.4	4.0	M5X0.8	9.5	4.7	0.09	
202-9			1.5748	0.8661	0.4724	0.2362	0.1338	0.1575	10-32UNF			0.20	
SB 203	11/16	17	40	22	12	6.0	3.4	4.0	M5X0.8	9.5	4.7	0.08	
203-11			1.5748	0.8661	0.4724	0.2362	0.1338	0.1575	10-32UNF			0.18	
SB 204	3/4	20	47	25	14	7.0	4.0	5.0	M6X0.75	12.8	6.6	0.13	
204-12			1.8504	0.9842	0.5512	0.2756	0.1575	0.1968	1/4-28UNF			0.27	
SB 205	7/8	25	52	27	15	7.5	4.2	5.5	M6X0.75	14.0	7.8	0.17	
205-14			2.0472	1.0630	0.5906	0.2953	0.1654	0.2165	1/4-28UNF			0.37	
205-15			15/16										
205-16	1												
SB 206	1 1/16	30	62	30	16	8.0	4.8	6.0	M6X0.75	19.4	11.2	0.26	
206-17			1 1/8										
206-18			1 3/16	2.4409	1.1811	0.6299	0.3150	0.1890	0.2362			1/4-28UNF	0.57
206-19			1 1/4										
SB 207	1 1/4	35	72	32	17	8.5	5.4	6.5	M8X1	25.6	15.2	0.38	
207-20			1 5/16										
207-21			1 3/8	2.8346	1.2598	0.6693	0.3346	0.2126	0.2559			5/16-24UNF	0.84
207-22			1 7/16										
207-23													
SB 208	1 1/2	40	80	34	18	9.0	5.9	8.0	M8X1	32.6	19.8	0.50	
208-24			1 9/16	3.1496	1.3386	0.7087	0.3543	0.2323	0.3150			5/16-24UNF	1.10
208-25													

Alternative dimensions are available, for critical engineering or construction requirements please confirm these dimensions with your local Ringball branch