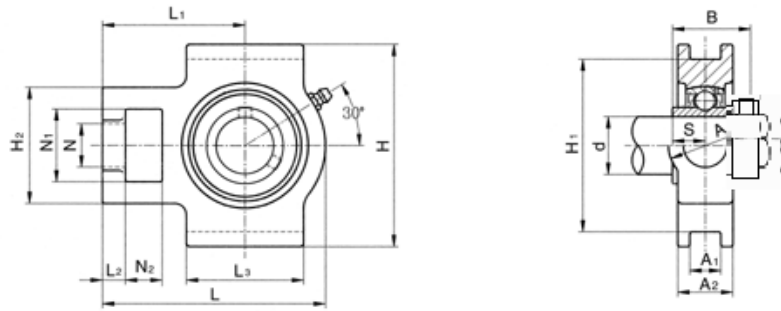




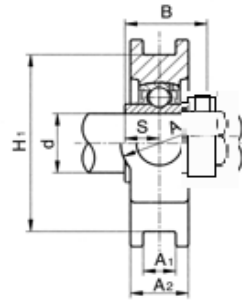
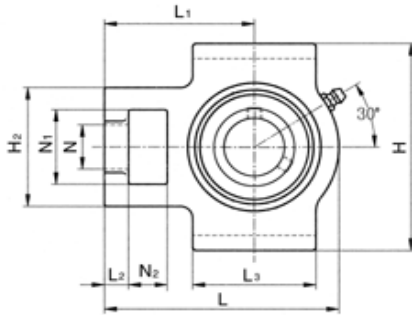
Take-up units
eccentric collar locking



NAT2

Unit No.	Shaft Dia.		Dimensions (mm) (inch)															Bearing No.	Housing No.	Weight (kg) (lb)
	d		L	L1	L2	L3	N	N1	N2	H	H1	H2	A	A1	A2	S	B			
	(in.)	(mm)																		
NAT 201 201-8	1/2	12	94	61	10	51	19	32	16	89	76	51	32	13.5	21	17	43.5	NA 201 201-8	T204	0.79 1.7
		3.7008	2.4016	0.3937	2.0079	0.7480	1.2598	0.6299	3.5039	2.9921	2.0079	1.2598	0.5312	0.8268	0.6693	1.7126				
NAT 202 202-9 202-10	9/16 5/8	15	94	61	10	51	19	32	16	89	76	51	32	13.5	21	17	43.5	NA 202 202-9 202-10	T204	0.78 1.7
		3.7008	2.4016	0.3937	2.0079	0.7480	1.2598	0.6299	3.5039	2.9921	2.0079	1.2598	0.5312	0.8268	0.6693	1.7126				
NAT 203 203-11	1/16	17	94	61	10	51	19	32	16	89	76	51	32	13.5	21	17	43.5	NA 203 203-11	T204	0.77 1.7
204 204-12	3/4	20	94	61	10	51	19	32	16	89	76	51	32	13.5	21	17	43.5	NA 204 204-12	T204	0.76 1.7
204		3.7008	2.4016	0.3937	2.0079	0.7480	1.2598	0.6299	3.5039	2.9921	2.0079	1.2598	0.5312	0.8268	0.6693	1.7126				
NAT 205 205-14 205-15 205-16	7/8 15/16	25	97	62	10	51	19	32	16	89	76	51	32	13.5	24	17.4	44.3	NA 205 205-14 205-15 205-16	T205	0.87 1.9
		3.8189	2.4409	0.3937	2.0079	0.7480	1.2598	0.6299	3.5039	2.9921	2.0079	1.2598	0.5312	0.9449	0.6850	1.7441				
NAT 206 206-17 206-18 206-19 206-20	1 1/16 1 1/8	30	113	70	10	57	22	37	16	102	89	56	37	13.5	28	18.2	48.3	NA 206 206-17 206-18 206-19 206-20	T206	1.27 2.8
		4.4488	2.7559	0.3937	2.2441	0.8661	1.4567	0.6299	4.0157	3.5039	2.2047	1.4567	0.5312	1.1024	0.7165	1.9016				
NAT 207 207-20 207-21 207-22 207-23	1 1/4 1 5/16	35	129	78	13	64	22	37	16	102	89	64	37	13.5	30	18.8	51.1	NA 207 207-20 207-21 207-22 207-23	T207	1.63 3.6
		5.0787	3.0709	0.5118	2.5197	0.8661	1.4567	0.6299	4.0157	3.5039	2.5197	1.4567	0.5312	1.1811	0.7402	2.0118				
NAT 208 208-24 208-25	1 1/2 1 9/16	40	144	88	16	83	29	49	19	114	102	83	49	17.5	33	21.4	56.3	NA 208 208-24 208-25	T208	2.29 5.0
		5.6693	3.4646	0.6299	3.2677	1.1417	1.9291	0.7480	4.4882	4.0157	3.2677	1.9291	0.6889	1.2992	0.8425	2.2165				
NAT 209 209-26 209-27 209-28	1 5/8 1 11/16	45	144	87	16	83	29	49	19	117	102	83	49	17.5	35	21.4	56.3	NA 209 209-26 209-27 209-28	T209	2.38 5.2
		5.6693	3.4252	0.6299	3.2677	1.1417	1.9291	0.7480	4.6063	4.0157	3.2677	1.9291	0.6889	1.3780	0.8425	2.2165				
NAT 210 210-30 210-31 210-32	1 7/8 1 15/16	50	149	90	16	86	29	49	19	117	102	83	49	17.5	37	24.6	62.7	NA 210 210-30 210-31 210-32	T210	2.50 5.5
		5.8661	3.5433	0.6299	3.3858	1.1417	1.9291	0.7480	4.6063	4.0157	3.2677	1.9291	0.6889	1.4567	0.9685	2.4685				

Alternative dimensions are available, for critical engineering or construction requirements please confirm these dimensions with your local Ringball branch



NAT2

Unit No.	Shaft Dia.		Dimensions															Bearing No.	Housing No.	Weight (kg) (lb)
	d		(mm) (inch)																	
	(in.)	(mm)	L	L ₁	L ₂	L ₃	N	N ₁	N ₂	H	H ₁	H ₂	A	A ₁	A ₂	S	B			
NAT211		55	171	106	19	95	35	64	25	146	130	102	64	27	38	27.7	71.4	NA211	T211	3.86
211-32	2																	211-32		
211-34	2 1/8		6.7323	4.1732	0.7480	3.7402	1.3780	2.5197	0.9842	5.7480	5.1181	4.0157	2.5197	1.0625	1.4961	1.0906	2.8110	211-34		8.5
211-35	2 3/16																	211-35		
NAT212		60	194	119	19	102	35	64	32	146	130	102	64	27	42	30.9	77.8	NA212	T212	4.79
212-36	2 1/4																	212-36		
212-37	2 5/16		7.6378	4.6850	0.7480	4.0157	1.3780	2.5197	1.2598	5.7480	5.1181	4.0157	2.5197	1.0625	1.6535	1.2165	3.0630	212-37		10.6
212-38	2 3/8																	212-38		
212-39	2 7/16																	212-39		
NAT213		65	224	137	21	121	41	70	32	167	151	111	70	27	44	34.1	85.7	NA213	T213	6.96
213-40	2 1/2		8.8189	5.3937	0.8268	4.7638	1.6142	2.7559	1.2598	6.5748	5.9449	4.3701	2.7559	1.0625	1.7323	1.3425	3.3740	213-40		15.3
NAT214		70	224	137	21	121	41	70	32	167	151	111	70	27	46	34.1	85.7	NA214	T214	7.05
214-43	2 1/16		8.8189	5.3937	0.8268	4.7638	1.6142	2.7559	1.2598	6.5748	5.9449	4.3701	2.7559	1.0625	1.8110	1.3425	3.3740	214-43		15.5
214-44	2 3/4																	214-44		
NAT215		75	232	140	21	121	41	70	32	167	151	111	70	27	48	37.3	92.1	NA215	T215	7.31
215-46	2 7/8																	215-46		
215-47	2 15/16		9.1338	5.5118	0.8268	4.7638	1.6142	2.7559	1.2598	6.5748	5.9449	4.3701	2.7559	1.0625	1.8898	1.4685	3.6260	215-47		16.1
215-48	3																	215-48		

Alternative dimensions are available, for critical engineering or construction requirements please confirm these dimensions with your local Ringball branch