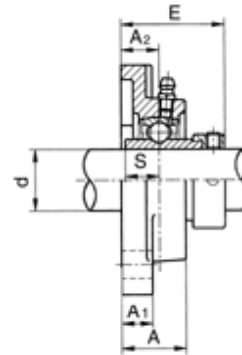
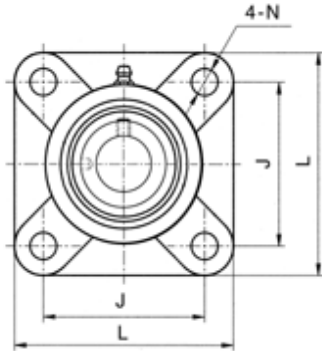




Four-bolt flange units  
eccentric collar locking

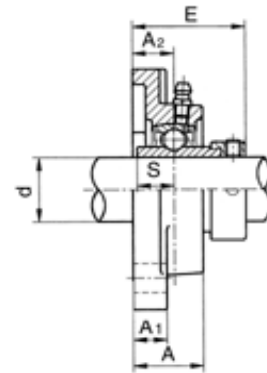
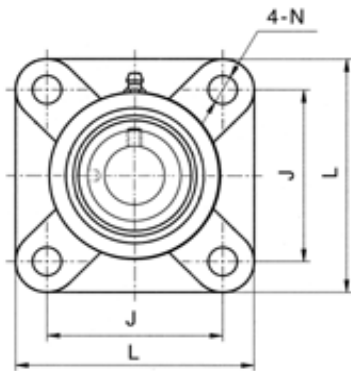


**NANF2**

Unit No.	Shaft Dia.		Dimensions (mm) (inch)								Bolt Used (mm) (in.)	Bearing No.	Housing No.	Weight (kg) (lb)
	d		L	J	A <sub>2</sub>	A <sub>1</sub>	A	N	E	S				
	(in.)	(mm)												
NANF201	12	86	64	19	15	29.5	11.5	45.5	17.0	M10	NA201	NF204	0.82	
201-8													1/2	3.3858
NANF202	15	86	64	19	15	29.5	11.5	45.5	17.0	M10	NA202	NF204	0.80	
202-9													9/16	3.3858
202-10	5/8	3.3858	2.5197	0.7480	0.5906	1.1614	0.4528	1.7913	0.6693	3/8	202-10			
NANF203	17	86	64	19	15	29.5	11.5	45.5	17.0	M10	NA203	NF204	0.79	
203-11													11/16	3.3858
NANF204	20	86	64	19	15	29.5	11.5	45.5	17.0	M10	NA204	NF204	0.77	
204-12													3/4	3.3858
NANF205	25	95	70	19	15	30	11.5	45.9	17.4	M10	NA205	NF205	0.95	
205-14													7/8	3.7402
205-15	15/16	3.7402	2.7559	0.7480	0.5906	1.1811	0.4528	1.8071	0.6850	3/8	205-15			
205-16	1	3.7402	2.7559	0.7480	0.5906	1.1811	0.4528	1.8071	0.6850	3/8	205-16			
NANF206	30	108	83	20	16	33	13	50.1	18.2	M10	NA206	NF206	1.32	
206-17													1 1/16	4.2520
206-18	1 1/8	4.2520	3.2677	0.7874	0.6299	1.2992	0.5118	1.9724	0.7165	3/8	206-18			
206-19	1 3/16	4.2520	3.2677	0.7874	0.6299	1.2992	0.5118	1.9724	0.7165	3/8	206-19			
206-20	1 1/4	4.2520	3.2677	0.7874	0.6299	1.2992	0.5118	1.9724	0.7165	3/8	206-20			
NANF207	35	117	92	21	17	36	13	53.3	18.8	M10	NA207	NF207	1.77	
207-20													1 1/4	4.6063
207-21	1 5/16	4.6063	3.6220	0.8268	0.6693	1.4173	0.5118	2.0984	0.7402	3/8	207-21			
207-22	1 3/8	4.6063	3.6220	0.8268	0.6693	1.4173	0.5118	2.0984	0.7402	3/8	207-22			
207-23	1 1/16	4.6063	3.6220	0.8268	0.6693	1.4173	0.5118	2.0984	0.7402	3/8	207-23			
NANF208	40	130	102	24	17	39	14	58.9	21.4	M12	NA208	NF208	2.12	
208-24													1 1/2	5.1181
208-25	1 9/16	5.1181	4.0157	0.9449	0.6693	1.5354	0.5512	2.3189	0.8425	1/2	208-25			
NANF209	45	137	105	24	18	40	16	58.9	21.4	M14	NA209	NF209	2.53	
209-26													1 5/8	5.3937
209-27	1 11/16	5.3937	4.1338	0.9449	0.7087	1.5748	0.6299	2.3189	0.8425	9/16	209-27			
209-28	1 3/4	5.3937	4.1338	0.9449	0.7087	1.5748	0.6299	2.3189	0.8425	9/16	209-28			
NANF210	50	144	111	28	20	46	16	66.1	24.6	M14	NA210	NF210	2.95	
210-30													1 7/8	5.6693
210-31	1 15/16	5.6693	4.3701	1.1024	0.7874	1.8110	0.6299	2.6024	0.9685	9/16	210-31			
210-32	2	5.6693	4.3701	1.1024	0.7874	1.8110	0.6299	2.6024	0.9685	9/16	210-32			

Alternative dimensions are available, for critical engineering or construction requirements please confirm these dimensions with your local Ringball branch

Four-bolt flange units  
eccentric collar locking



**NANF2**

Unit No.	Shaft Dia.		Dimensions (mm) (inch)								Bolt Used (mm) (in.)	Bearing No.	Housing No.	Weight (kg) (lb)
	d		L	J	A <sub>2</sub>	A <sub>1</sub>	A	N	E	S				
	(in.)	(mm)												
NANF211		55	163	130	31	21	49	17	74.7	27.7	M16	NA 211	NF211	4.18
211-32	2											211-32		
211-34	2 1/8		6.4173	5.1181	1.2205	0.8268	1.9291	0.6693	2.9803	1.0906	5/8	211-34		9.2
211-35	2 3/16											211-35		
NANF212		60	175	143	34	21	53	17	80.9	30.9	M16	NA 212	NF212	5.15
212-36	2 1/4											212-36		
212-37	2 5/16		6.8898	5.6299	1.3386	0.8268	2.0886	0.6693	3.1850	1.2165	5/8	212-37		11.3
212-38	2 3/8											212-38		
212-39	2 7/16											212-39		
NANF213		65	187	149	38	22	59	18	89.6	34.1	M16	NA 213	NF213	6.1
213-40	2 1/2		7.3622	5.8661	1.4961	0.8661	2.3228	0.7087	3.5276	1.3425	5/8	213-40		13.4
NANF214		70	188	152	38	23	60	18	89.6	34.1	M16	NA 214	NF214	6.62
214-43	2 1/16		7.4016	5.9842	1.4961	0.9055	2.3622	0.7087	3.5276	1.3425	5/8	214-43		14.6
214-44	2 3/4											214-44		
NANF215		75	197	152	41	24	62	18	95.8	37.3	M16	NA 215	NF215	7.26
215-46	2 7/8		7.7599	5.9842	1.6142	0.9449	2.4409	0.7087	3.7716	1.4685	5/8	215-46		16.0
215-47	2 15/16											215-47		
215-48	3											215-48		

Alternative dimensions are available, for critical engineering or construction requirements please confirm these dimensions with your local Ringball branch