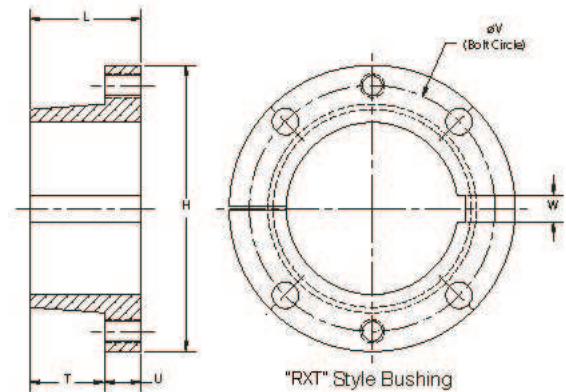


Table No. 1

Bushing Part No.	Dimensions			Cap Screws		Wt. Lbs.
	L	U	H	No.	Size	
RXTB15	1 1/8	3/8	2 7/8	4	1/4X1	0.7
RXTB20	1 13/32	15/32	3 3/4	4	5/16X1 1/4	1.5
RXTB25	1 7/8	5/8	4 7/16	4	3/8X1 3/4	2.6
RXTB30	2 1/16	11/16	5 5/16	4	7/16X1 1/2	4.2
RXTB35	2 15/32	25/32	6 5/16	4	1/2X1 3/4	7.4
RXTB40	2 13/16	7/8	7 1/8	4	9/16X2	10.5
RXTB45	3 5/16	15/16	8	4	5/8X2 1/4	14.8
RXTB50	3 3/4	1	10 1/8	4	3/4X2 1/2	27.8
RXTB60	4 1/8	1 1/8	11 15/16	4	7/8X2 1/2	42.8
RXTB70	4 11/16	1 5/16	13 15/16	4	1X3	66.3
RXTB80	5 1/8	1 3/8	15 5/8	4	1 1/8X3 1/2	85.7
RXTB100	6 3/16	1 9/16	17 15/16	6	1 1/8X3 1/2	146
RXTB120	7 1/16	1 3/4	20 5/8	8	1 1/8X3 1/2	216

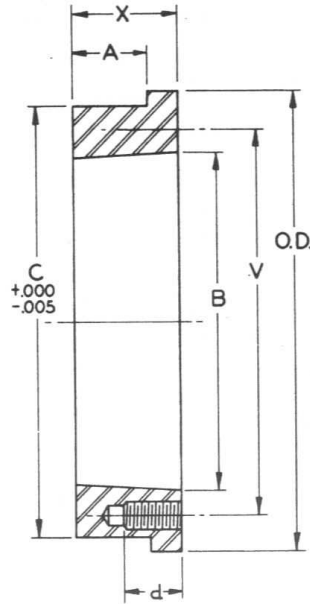
Table No. 2

Bushing Part No.	Stock Bores	Keyseat	Key Supplied
RXTB15	5/8, 3/4, 7/8, 1, 1 1/8, 1 3/16, 1 1/4, 1 7/16, 1 1/2	3/16X3/32 1/4X1/8 3/8X1/8	none none 3/8X5/16X1 1/8
RXTB20	3/4 1, 1 3/16, 1 1/4 1 7/16, 1 1/2, 1 11/16 1 15/16, 2	3/16X3/32 1/4X1/8 3/8X3/16 1/2X3/16	none none none 1/2X7/16X1 3/8
RXTB25	1, 1 3/16, 1 1/4 1 7/16, 1 1/2, 1 11/16, 1 3/4 1 15/16, 2, 2 3/16 2 7/16	1/4X1/8 3/8X3/16 1/2X1/4 5/8X1/8	none none none 5/8X7/16X1 3/4
RXTB30	1 7/16, 1 1/2, 1 11/16 1 15/16, 2 3/16 2 7/16, 2 11/16 2 15/16	3/8X3/16 1/2X1/4 5/8X5/16 3/4X3/16	none none none 3/4X9/16X2
RXTB35	1 15/16, 2 3/16 2 7/16, 2 11/16 2 15/16 3 7/16	1/2X1/4 5/8X5/16 3/4X3/8 7/8X5/16	none none none 7/8X3/4X2 1/2
RXTB40	2 7/16 2 15/16 3 7/16 3 15/16	5/8X5/16 3/4X3/8 7/8X7/16 1X3/8	none none none 1X7/8X2 3/4
RXTB45	3 7/16 3 15/16 4 7/16	7/8X7/16 1X1/2 1X3/8	none none 1X7/8X3 1/4
RXTB50	3 15/16, 4 7/16 4 15/16	1X1/2 1 1/4X5/8	none none
RXTB60	5 7/16, 5 1/2 5 15/16, 6	1 1/4x5/8 1 1/2x3/4	none none
RXTB70	6 7/16, 6 1/2 6 15/16, 7	1 1/2X3/4 1 3/4X3/4	none none
RXTB80	7 1/2 7 15/16, 8	1 3/4X3/4 2X3/4	none none
RXTB100	8 1/2, 9 9 7/16, 9 1/2, 10	2X3/4 2 1/2X7/8	none none
RXTB120	10 1/2, 11 11 1/2, 12	2 1/2X7/8 3X1	none none



RECOMMENDED CAP SCREW TORQUE

RXT Size	Wrench Torque (in.)	Cap Screw Size
15	95	1/4,
20	200	5/16
25	350	3/8
30	550	7/16
35	840	1/2
40	1200	9/16
45	1680	5/8
50	3000	3/4
60	4800	7/8
70	7200	1
80	9000	1 1/8
100	9000	1 1/8
120	9000	1 1/8



"RXT" Style Hub

Table No. 1

Part No	For Bushing	Dimensions						Tapped Holes		Wt. Lbs.
		O.D.	A	B	C	V	x	No.	Size	
RXTH15	RXTB15	3 1/4"	7/16"	2.000"	2 7/8"	2 7/16"	5/8"	4	1/4"-20NC	0.7
RXTH20	RXTB20	4 1/8	9/16	2.688	3 13/16	3 3/16	13/16	4	5/16-18NC	1.5
RXTH25	RXTB25	4 3/4	13/16	3.188	4 3/8	3 3/4	1 1/8	4	3/8-16NS	2.6
RXTH30	RXTB30	6	7/8	3.875	5 3/4	4 9/16	1 1/4	4	7/16-14NC	4.1
RXTH35	RXTB35	6 5/8	1 1/16	4.688	6.345	5 7/16	1 1/2	4	1/2-13NC	6.6
RXTH40	RXTB40	7 5/8	1 1/4	5.313	7 1/4	6 1/8	1 3/4	4	9/16-12NC	10.7
RXTH45	RXTB45	8 3/8	1 1/2	5.938	8	6 7/8	2 1/8	4	5/8-11NC	15.4
RXTH50	RXTB50	10	1 3/4	7.250	9 9/16	8 5/16	2 1/2	4	3/4-10NC	24.9
RXTH60	RXTB60	11 3/4	1 15/16	8.625	11 1/4	9 7/8	2 3/4	4	7/8-9NC	36.4
RXTH70	RXTB70	13 11/16	2 3/16	10.000	13 3/16	11 9/16	3 1/8	4	1-8NC	57.7
RXTH80	RXTB80	15	2 7/16	11.125	14 5/8	12 7/8	3 7/16	4	1 1/8-7NC	75.6
RXTH100	RXTB100	18	3	13.688	17 1/2	15 9/16	4 1/8	6	1 1/8-7NC	122
RXTH120	RXTB120	21	3 1/2	16.188	20 1/2	18 3/16	4 13/16	8	1 1/8-7NC	189